

# User Manual



## HD-VP210

## Content

Chapter 1 Interface connection.....	1
1.2 Hardware connection .....	6
Chapter 2 HDSet installation .....	7
Chapter 3 HD-VP210 Parameter settings .....	9
3.1 Connection .....	9
3.2 Screen Configuration.....	9
3.3 Input source switching The HD-VP210 supports simultaneous access to five signal sources, and can switch to the input source that needs to be played at any time as required.....	13
3.4 Scale setting .....	14
3.5 Image setting.....	15
3.6 U Disk setting .....	16
3.7 Template setting.....	17

3.8 Adadvanced setting .....	17
3.8.1 Language .....	17
3.8.2 Sound Settings.....	18
3.8.3 Firmware Upgrade.....	19
3.8.4 Factory reset.....	19
3.8.5 System information .....	19
3.8.6 other setting.....	20
3.8.7 Quick connection.....	21
3.8.8 Load configuration.....	21
3.9 Brightness adjust.....	22
Chapter 4 Advanced function.....	23
4.1 USB Playing.....	23

## Chapter 1 Interface connection

Front panel:



No.	Button	Function Description
-----	--------	----------------------

1	Power button	Device power switch button
2	LCD Screen	Display device menu information
3	Rotary button	Rotate the knob to select the menu and press to confirm
4	Return key	Exit the current menu or operation
5	SCALE	Full screen zoom shortcut button
6	Input source	Under U-disk input playback mode, DVI button will be defined as ⏮, means play previous file. Under U-disk input playback mode, VGA button will be defined as ⏭, means play next file. Under U-disk input playback mode, CVBS and HDMI button will be defined as ⏸, means pause or play the file. Under U-disk input playback mode, USB button will be defined as ■, means stop play.

## Rear Panel:



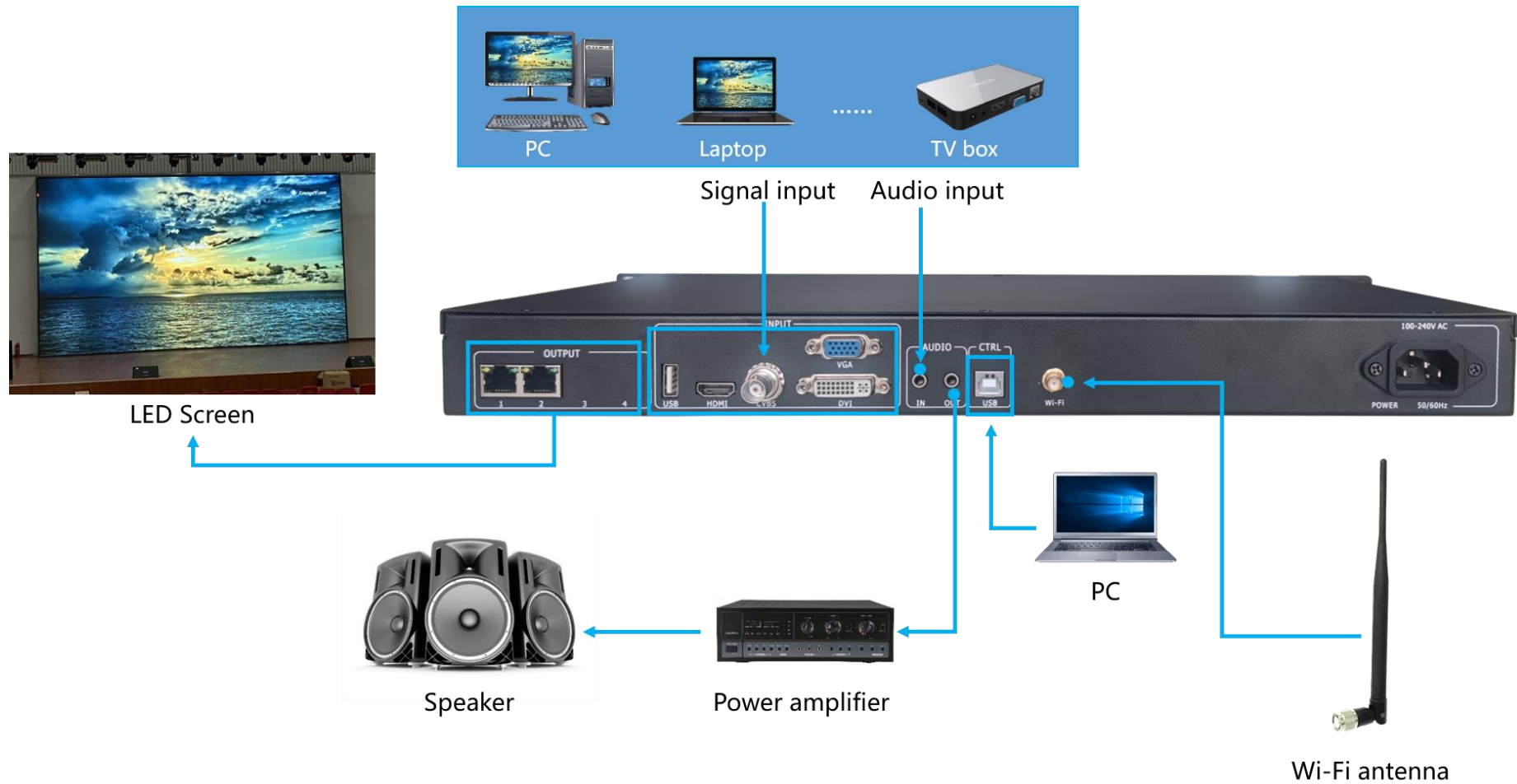
Port	Quantity	Function
USB (Type A)	1	Directly play videos pictures in the USB Image file format: jpg、jpeg、png & bmp; Video file format: mp4、avi、mpg、mkv、mov、vob & rmvb; Video coding: MPEG4(MP4),MPEG_SD/HD,H.264(AVI,MKV),FLV
HDMI	1	Signal standard: HDMI1.3 Backward compatible Resolution: VESA Standard, $\leq 1920 \times 1080p@60Hz$
CVBS	1	Signal standard: PAL/NTSC 1Vpp $\pm$ 3db (0.7V Video+0.3v Sync) 75

		ohm Resolution: 480i,576i
VGA	1	Signal standard: R、 G、 B、 Hsync、 Vsync:0 to1Vpp±3dB (0.7V Video+0.3v Sync ) 75 ohm black level: 300mV Sync-tip: 0V Resolution: VESA Standard, ≤1920×1080p@60Hz
DVI	1	Signal standard: DVI1.0, HDMI1.3 Backward compatible Resolution: VESA Standard, PC to 1920x1080, HD to 1080p
AUDIO	2	Audio input and output
Output Port		
Port	Quantity	Function
LAN	2	2-way network port output interface, connected to the acceptance card

Control interface		
Port	Quantity	Function
Square USB (Type B)	1	Connect computer setting screen parameters
Power interface	1	110-240VAC, 50/60Hz



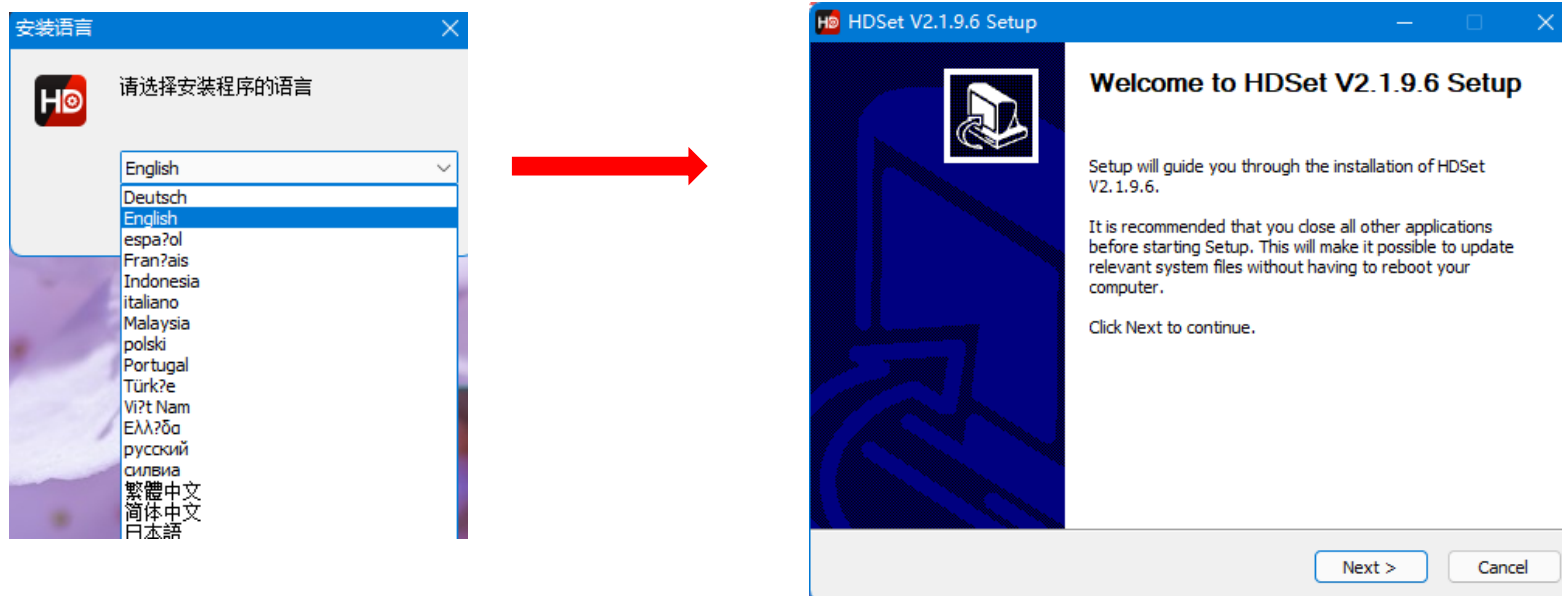
## 1.2 Hardware connection



## Chapter 2 HDSet installation

Please download the installation package of HDSet software from Huidu's official website [www.huidu.cn](http://www.huidu.cn), and complete the installation according to the diagrams below:

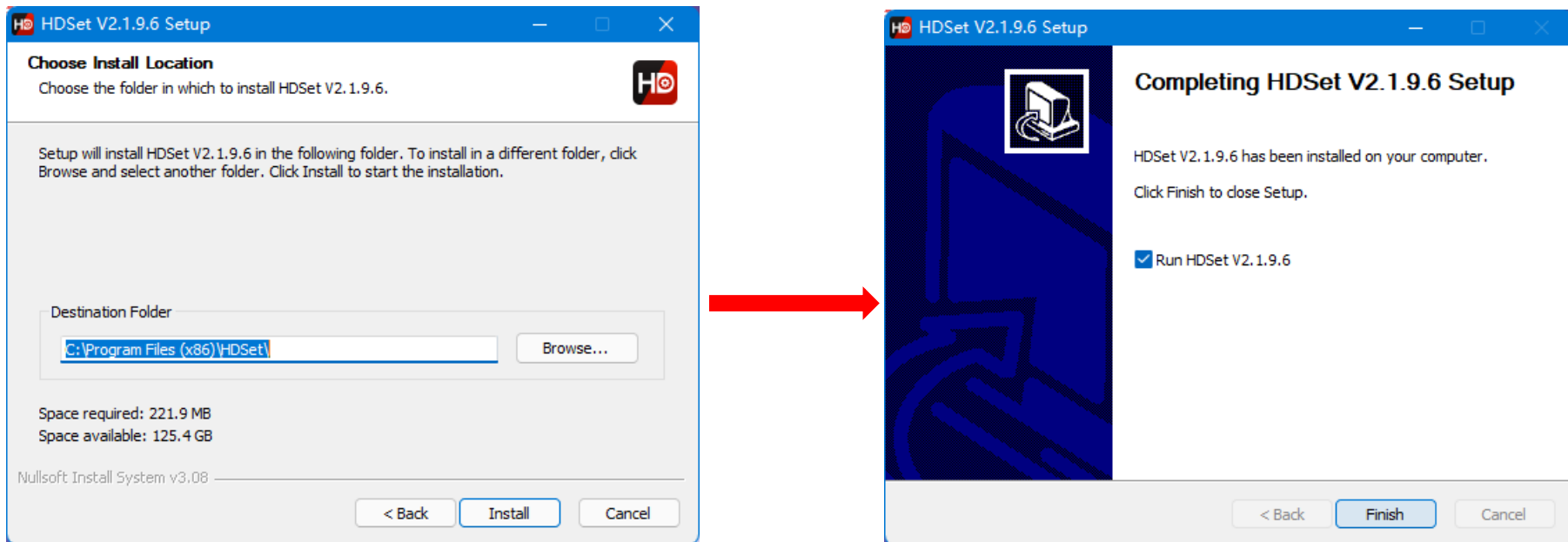
1.Run the software package,then select language for installer. Click [OK] to go on.



2. After selecting a language, an installation wizard like below will appear. Click [Next].

Choose the installation location, click [Browse] to change the default target location, then click [Install] after completing;

After the installation is complete, you are ready to use HDSet.



## Chapter 3 HD-VP210 Parameter settings

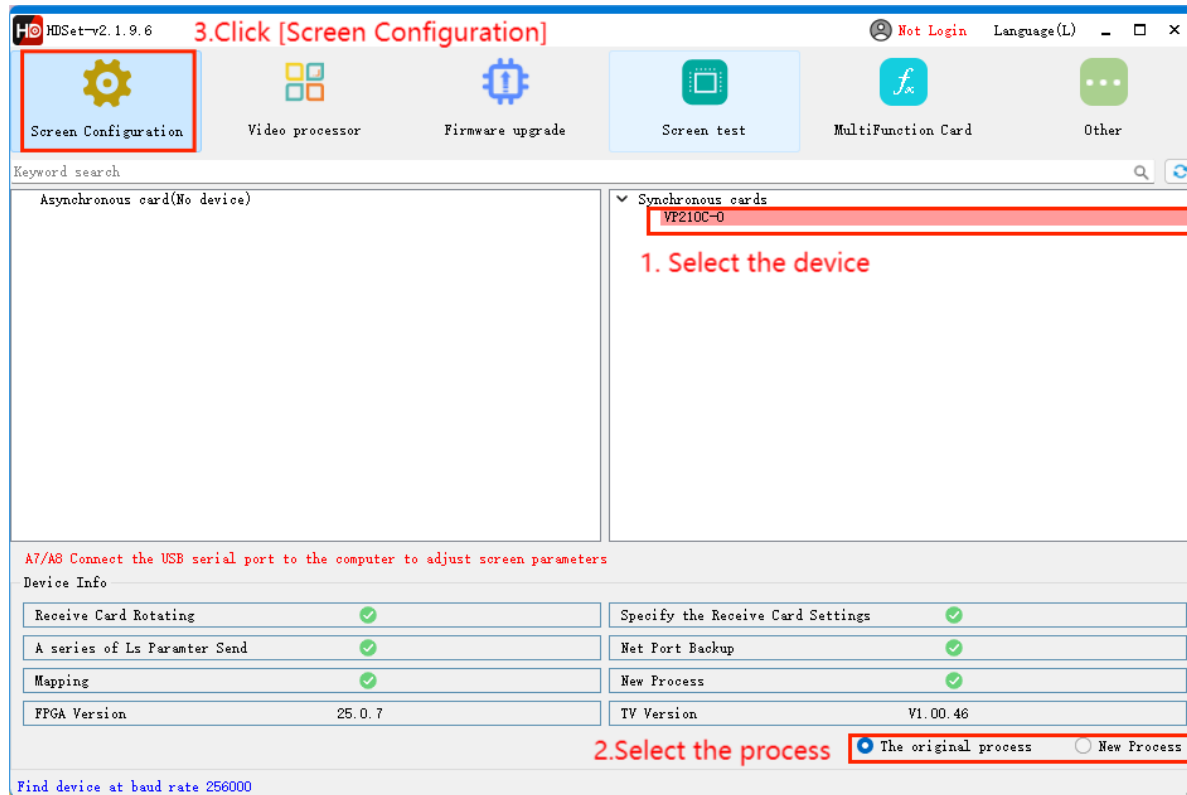
### 3.1 Connection

Connect the A4 to the computer by USB-B type cable.

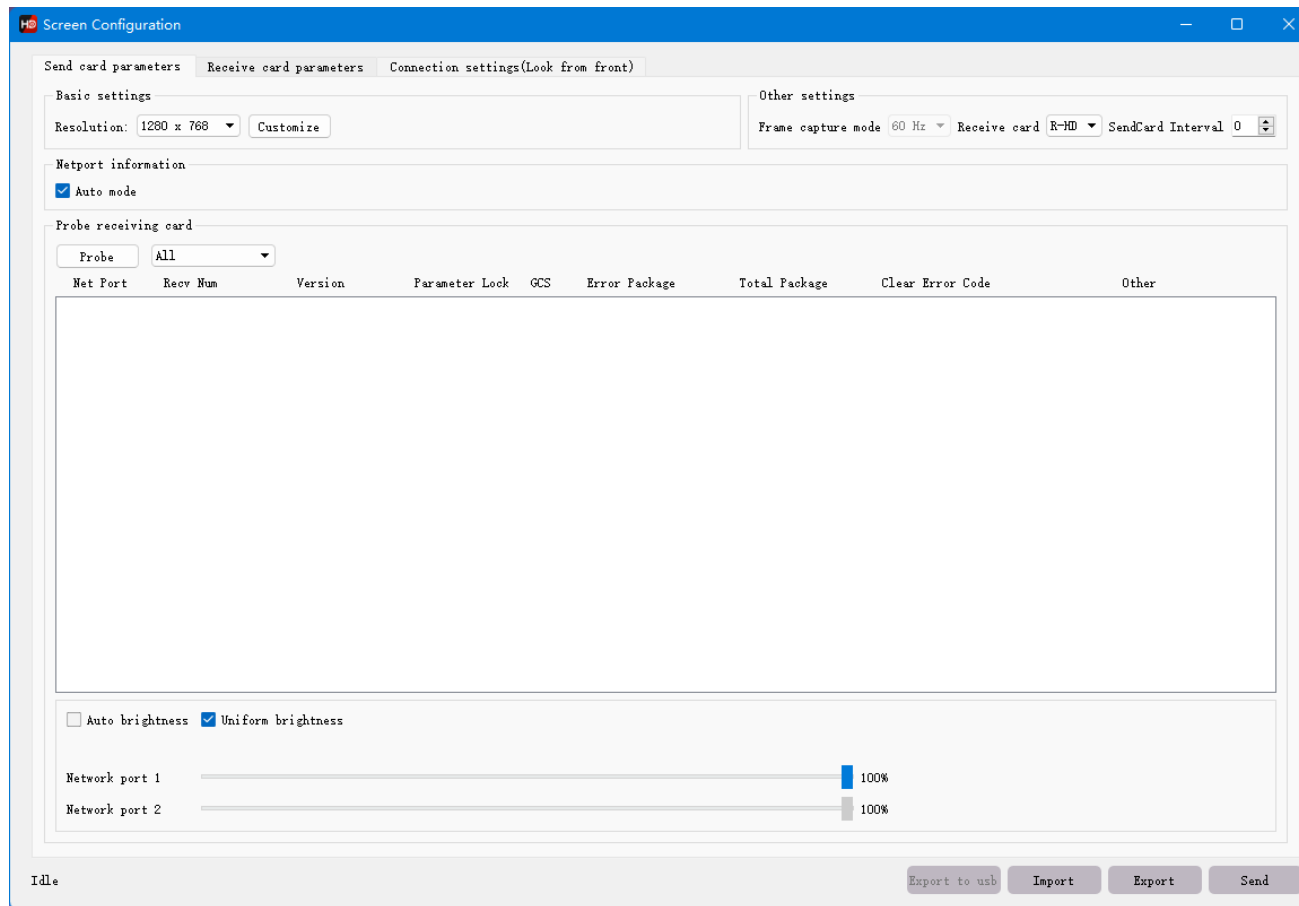


### 3.2 Screen Configuration

1.Run HDset software,then select device and process, click [Screen Configuration].



2. you can debug receiving cards.



Screen Configuration

Send card parameters   Receive card parameters   Connection settings(Look from front)

Basic parameters

Refresh rate: 120   Refresh rate acceleration: 2

Gradation: 512   Brightness level: Normal brightness

DCLK Frequency: 20.6MHz   Priority mode: Refresh rate priori

Phase: 1   Gray mode: Low gray balance

Blanking Line: 25   Line break time: 0

Refresh optimization

HUB settings

HUB75-12 (24RGB)    HUB75-10 (20RGB)

HUB75-16 (32RGB)    HUB75-20 (extended)

R505 (28RGB)    Serial 128 group

Other

Load File   Smart settings   Advanced settings   Data group exchange

Color channel   Data set offset

Tips

Module type: Full Color

Scan: 1 / 16

Decoding method: 138

Data polarity: Low effective

OE polarity: Low effective

Highly effective: 68.39%

Min OE: 1328

Drive: Conventional chip

etails Of Modul

Case

Mode: Single separate

Width: 128 <= 443

Height: 128 <= 512

Read back   Network port 1   Card 1

Idle   Export to usb   Import   Export   Send

### 3.3 Input source switching

The HD-VP210 supports simultaneous access to five signal sources, and can switch to the input source that needs to be played at any time as required.

There are two ways to switch input sources.

One is to press the button in the "SOURCE" area on the front panel to quickly switch.



The other is to select input sources through the menu interface.

Press the knob to select "Input Setting" → "Source" .





### 3.4 Scale setting

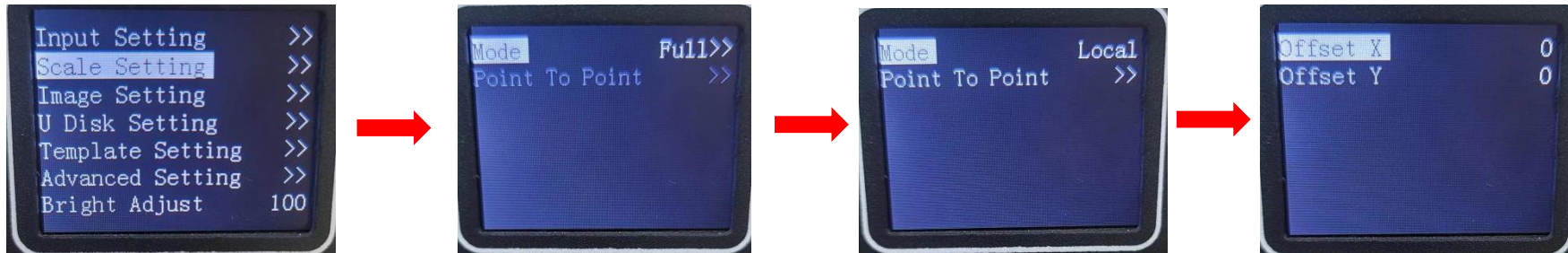
HD-VP210 supports point-to-point image output. There are two ways to switch input sources.

One is press the 'SCALE' button.



another one is to select Scale setting through the menu interface.

You can set offset X and offset Y.



### 3.5 Image setting

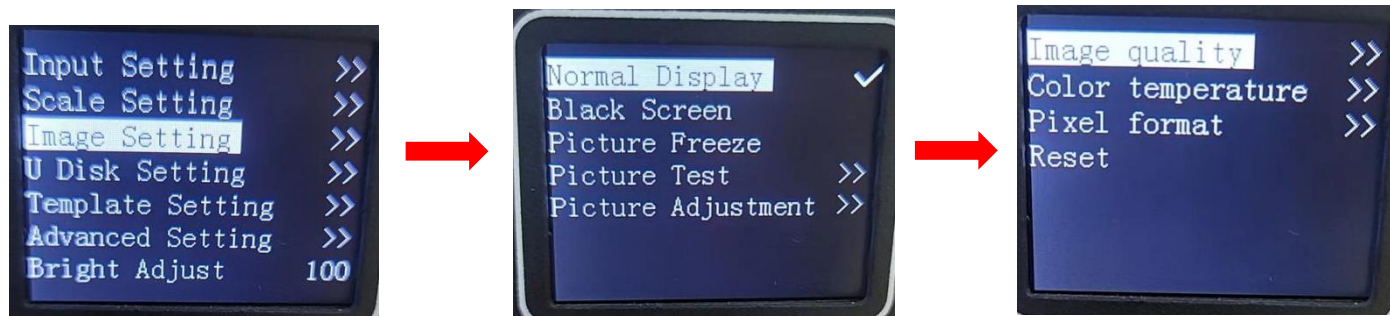
Normal Display: normal output status

Black Screen: cut off output then show nothing.

Picture Freeze: Lock the current screen.

Picture test: Color test.

Picture Adjustment: Adjust the image quality, color temperature and pixel format.

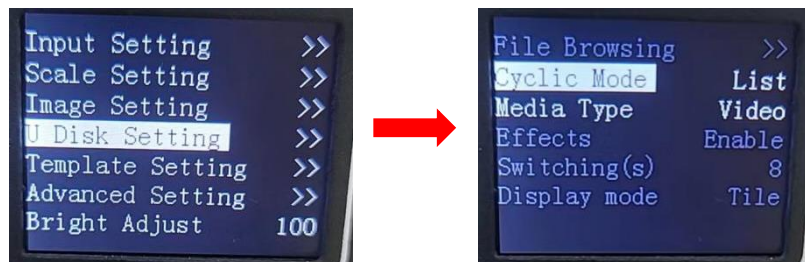


### 3.6 U Disk setting

File Browsing: You can browse the files in the U disk.

Cyclic mode: List or Single. 'List' means play in loop; 'Single' mean repeat one file.

For Picture, you can turn on/off Effects, edit the switching time and display mode.



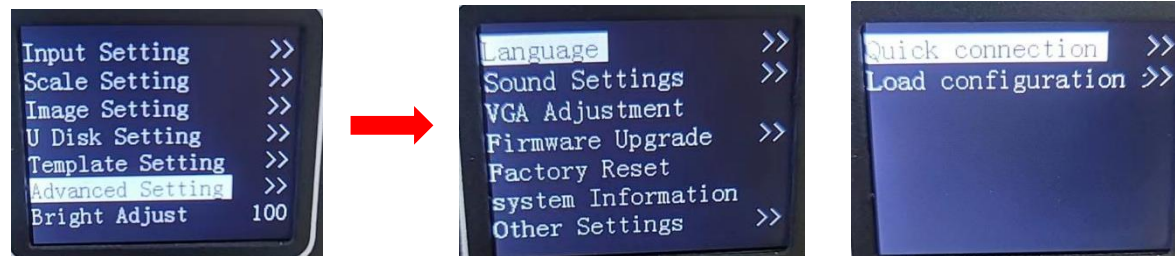
### 3.7 Template setting

You can save up to 7 templates.

‘★’ mean this teampole is already occupied.



### 3.8 Advanced setting



#### 3.8.1 Language

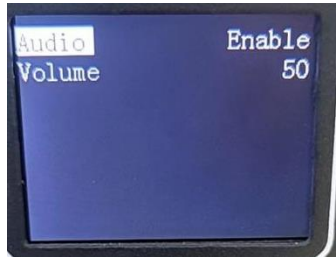
Choose Chinese/English.



### 3.8.2 Sound Settings

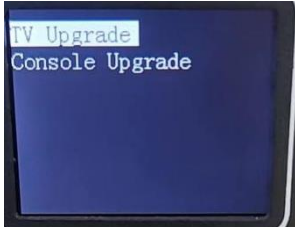
1. Turn on/off audio.

2. Set fixed volume.



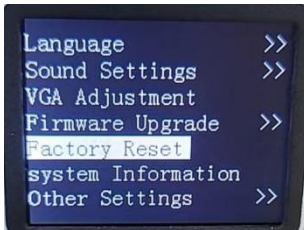
### 3.8.3 Firmware Upgrade

Upgrade TV and console firmware by U disk.



### 3.8.4 Factory reset

Restore the device to factory settings.



### 3.8.5 System information

Check the device's DSP and MCU version.



### 3.8.6 other setting

#### 1.Management language

You can add language by U disk

#### 2. WiFi management

Turn on/off WiFi

#### 3. EDID Mode

Choose DVI/HDMI for input source.



### 3.8.7 Quick connection

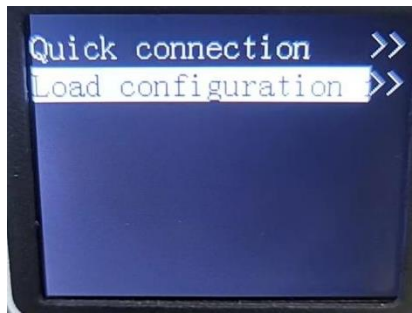
The HD-VP210 support quick connection setting.



### 3.8.8 Load configuration

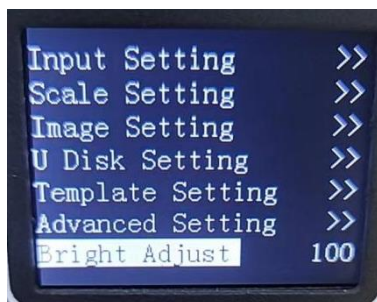
Load the configuration from U disk.





### 3.9 Brightness adjust

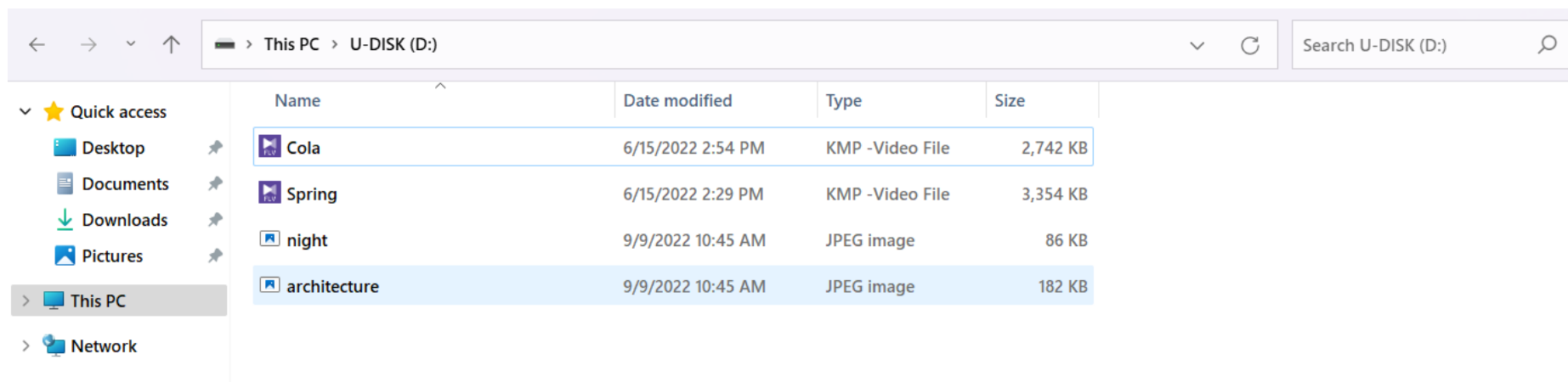
Set the fixed brightness.



## Chapter 4 Advanced function

### 4.1 USB Playing

1.Put the video and picture in the root catalog of U-disk.



2.Insert the U-disk to the VP210.

